

5 REASONS WHY INTERNATIONAL STUDENTS CONSIDER ADVANCED PATHWAY TO THE US

Top-notch education

The United States holds the distinction of housing half of the top 10 global ranking medical universities that speaks volumes about the country's priority on strengthening and continuously evolving health infrastructure with a global impact in mind. With access to the state-of-the-art facilities and dedicated faculties, a student has matchless opportunities to gain knowledge from the best in the world.

Global reputation

Educational degrees earned from the universities in the USA are globally recognized and open a plethora of opportunities worldwide, all the more reason to study from thousands of colleges that offer a wide range of specialised courses within the field of medicine and allied disciplines.

Excellent Research opportunities

The USA has a strong emphasis on research, and students in our program will have abundant opportunities to engage in cutting-edge research. They will have access to funding and resources that will enhance their research capabilities and contribute to the advancement of medical knowledge.





Career opportunities galore

Quality education, multicultural environment, robust curriculum, and the access to the state-of-the-art facilities in the US, produce some of the best professionals trained to make a positive impact in the health infrastructure at a global level. Being multidisciplinary in nature, medical careers are required across spectra and the US university-bred professionals always have a competitive edge over others, particularly in a developing nation like India. Hence, there is no dearth of career opportunities for these professionals whether in the US or the outside world.

Better residency matching

Residency in the US is a cherished dream for so many. And the advanced pathway in medicine study in America is not just confined to helping a student attain world class knowledge from the best minds. It also equips a student with necessary knowledge to harness the opportunity of working within the USA. For example, there is never a shortage of clinical jobs in the US as physicians to patients ratio is highly unfavourable.

ABOUT THE **PROGRAM**

The entire program is laid out into four verticals:



Training and Mentoring



Clinical Rotations



ERAS/CV Preparation



**Residency Matching
Program**

01

Training and Mentoring

Training USMLE steps | Providing learning resources (Full suite subscription for McGraw Hill Access Medicine, First Aid Forward, Boards and Beyond, Infomedia , Qbank etc.) Clearing USMLE (United States Medical Licensing Examination) is a necessary prerequisite to be able to practise medicine in the United States territories. It is a 3-step test, which is highly standardised and usually complicated without having proper training and study planners.



This high level examination requires deep knowledge of the medical science and practical case-study-based clinical knowledge. The preparation is complex and stressful and requires long hours of strenuous groundwork. But there is a better alternative. **THE MET** provides its students an exhaustive training for USMLE steps that includes online group lectures, study planners, learning resources from world leaders in medical training like McGraw Hill (a subscription based resource that features leading medical content, self assessment material, etc.), First Aid Forward (provides users the ability to quiz themselves at the topic level and track their progress), Boards and Beyond (Comprehensive online resource that medical students and their institutions rely on to make complex concepts easy to understand), etc.

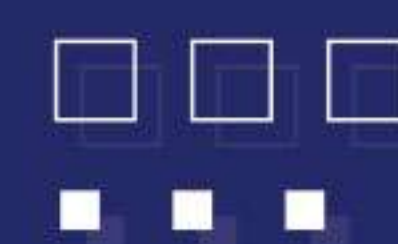
This is besides spark seminars by world renowned authors and professors, study planners throughout the course period, mock tests and online support services. The entire package comes with an innovative learning tool tailored to suit our student's needs. The course is developed with an aim to prepare you thoroughly to crack USMLE steps. We at "**THE MET**" are committed to providing optimal solutions for every international medical student and graduate.

02 Clinical Rotations

Clinical Rotations refers to the on-ground experience that students gain as part of a medical team. These rotations enable the students to apply the theoretical knowledge they've gained in the third and fourth year of their medical study directly on the real patients under the supervision of licensed practitioners.

The clinical rotations that spread over weeks and months include a number of skill enhancing activities that range from interpretation of medical reports, interviews with the patients, drafting treatment plans,

Clinical Rotations help International Medical Graduates to become accustomed with the U.S. healthcare system that's deeply linked with the insurance providers. We at the MET help the students in the application procedure for those streams of clinical rotations that match their goals. Nevertheless core rotations that include family medicine, internal medicine, psychiatry, paediatrics and surgery are mandatory but specialised streams fall under the elective rotations. They include cardiology, nephrology, oncology, immunology, neurology, radiology, etc. We at **The MET** are affiliated to a number of hospitals and clinics throughout the country and provide our students with the opportunity for hands-on training in their desired specialty. Besides, we also help them to secure letter of recommendation from Board Certified Physicians and clinical performance evaluations



Documentation For Clinical Rotations:

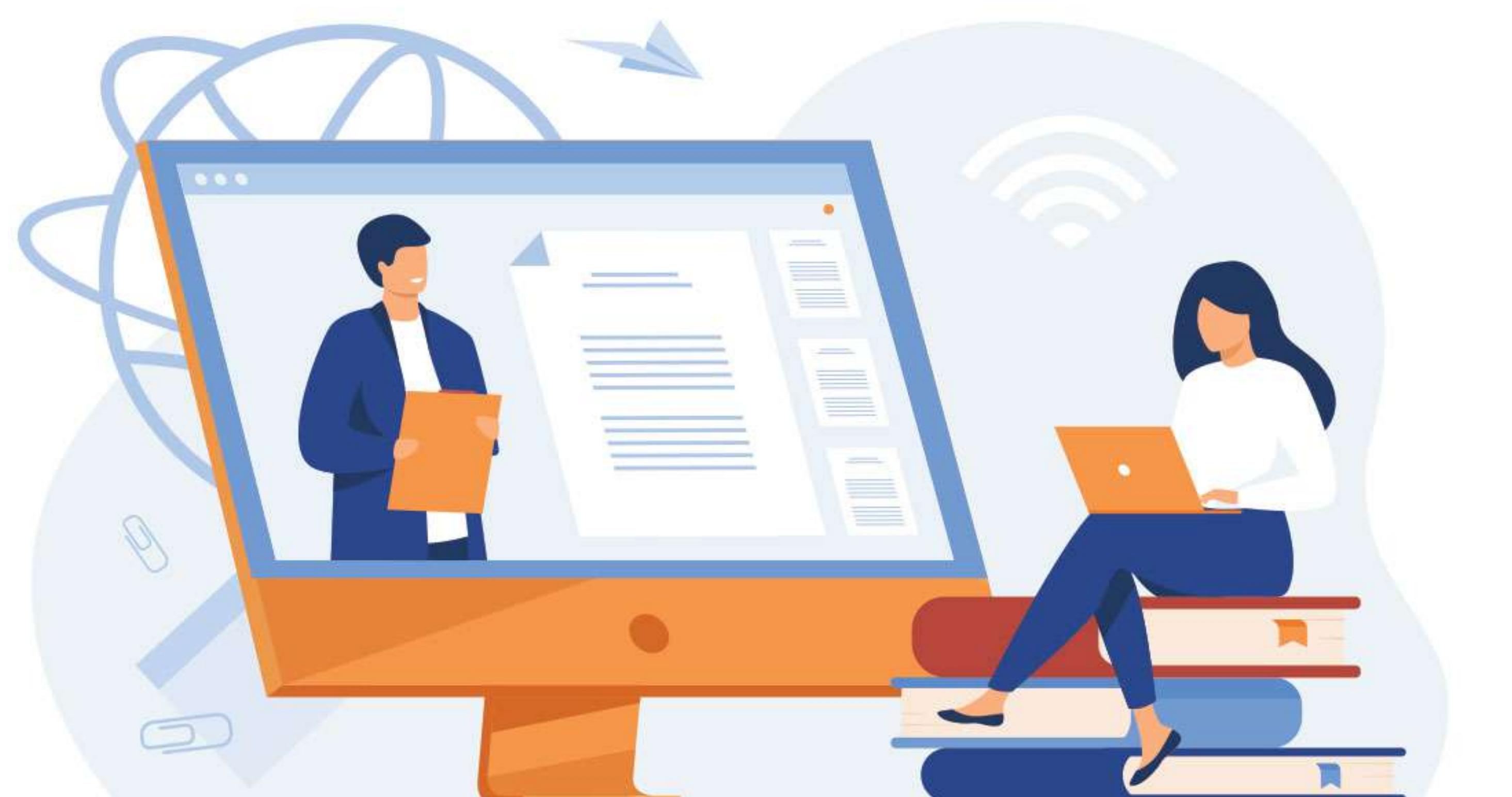


**USMLE Step 1 is not required to complete clinical rotations*

03

ERAS/CV Preparation

ERAS is an Electronic Residency Application Service. It is a centralised online platform used by applicants to apply to residency and fellowship programs in the United States. ERAS is run by the Association of American Medical Colleges (AAMC) and allows applicants to complete and submit their applications, as well as supporting documents such as transcripts, letters of recommendation, and personal statements, electronically.



Using ERAS, applicants can apply to residency and fellowship programs across multiple specialties and institutions with a single application, rather than having to submit separate applications to each program. The platform also provides tools for tracking the status of applications, managing interview invitations and scheduling, and communicating with programs.

ERAS opens for applications in the late spring or early summer, and deadlines for submitting applications and supporting documents vary depending on the specialty and program. ERAS is widely used by residency and fellowship programs in the United States and is a key part of the application process for medical graduates seeking to continue their training in the US.

ERAS Guidance Workshops

The MET's workshop helps you to understand

01
The procedure of when and how to apply in the ERAS.

02
The 16 specialties one can apply for.

03
How to procure letters of recommendation

04
The mechanism through which the complex ERAS process functions

The Association of American Medical Colleges (AAMC) runs the centralised online application system known as the Electronic Residency Application Service (ERAS). It's a single window channel that facilitates submission of applications with supporting documents and streamlines the residency application process for medical graduates.

After completion of the programme with **THE MET**, you will have in-depth understanding of the complex process involved in the preparation to gain entry to any U.S. post-graduate educational residency program. After acquiring deep knowledge through the workshops you will have a clear edge over your counterparts in terms of clarity of thoughts, articulation, confidence level and presentation.

04

The Road to the US Medical Residency

The Road to the US Medical Residency is a cherished dream but the path is circuitous and overwhelming. **The MET** with its vast experience and expertise is here to charter a customised course and pave the way for you to enter the US healthcare system. Our dedicated workshops, consultations, and step-by-step guidance make the journey result oriented and fruitful.

The MET's Road to Residency program unlocks once a candidate clears the USMLE tests and gains the required experience through the mandatory clinical rotations. Here is a synopsis of our services we render to the aspirants with an aim to help you get the IMG match

Winning CV – A Strong Personal Statement

A strong Curriculum Vitae is an essential component of the procedure and the quality of your personal statement is what sets you apart from the other applicants. It's the personal statement where you explain the reason for your interest in the specialty of your choice. The qualitative and quantitative analysis of the same weed out those with inadequate understanding of their subject. Our workshops help you to explain and understand:

01 What attracts you to a particular specialty.

06 What program directors are looking for in your candidature

02 Your strengths to convince you are the fittest for the job

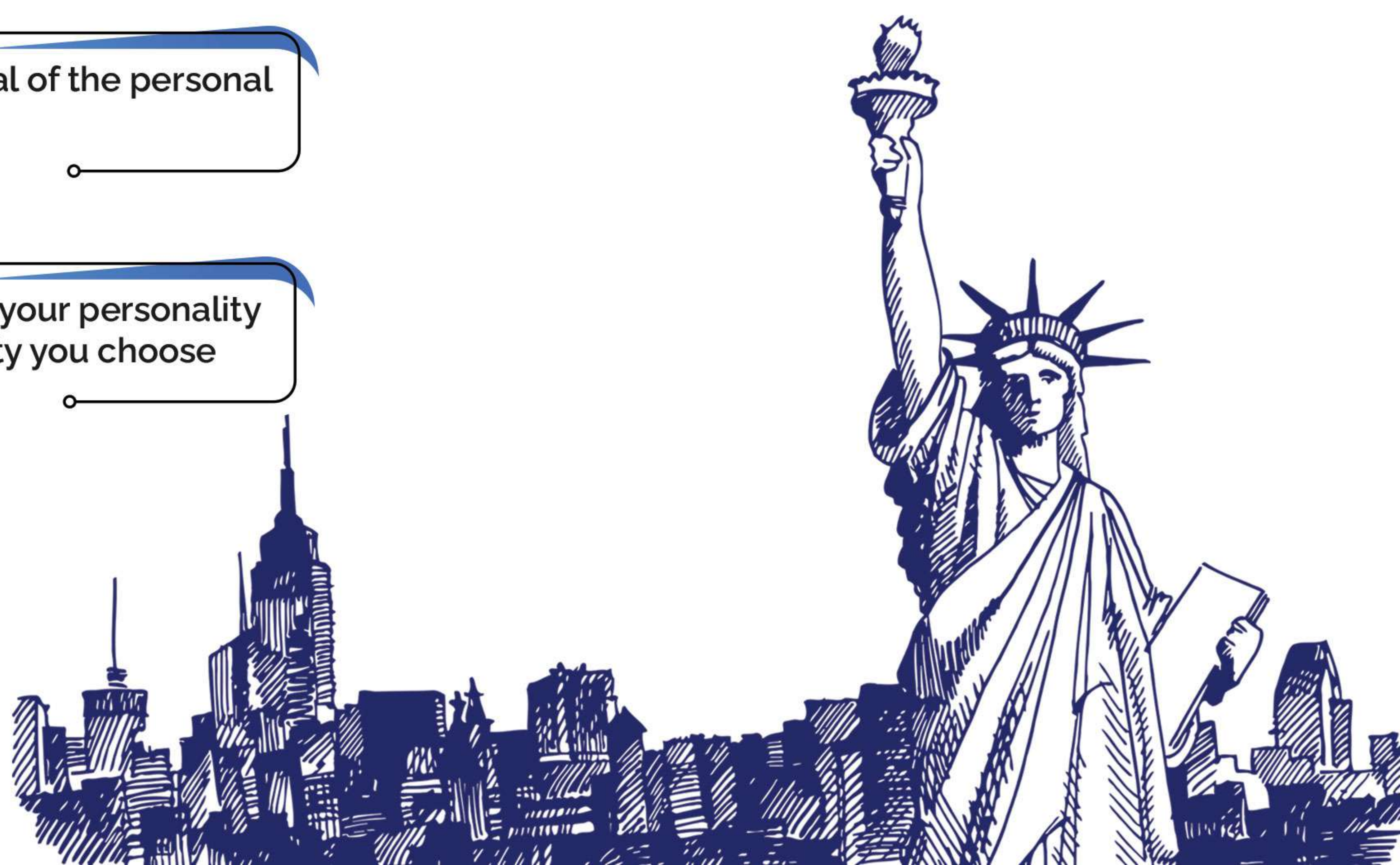
07 How to address red flags in the statement

03 Do's and Don'ts while writing the CV and the personal statement

08 How to draft a CV with a strong personal statement

04 The ultimate goal of the personal statement

05 How to connect your personality with the specialty you choose



ADDITIONAL **HIGH-QUALITY WORKSHOPS** TAILORED FOR USMLE STUDENTS.

Interview Workshops

Practical sessions aimed at improving communication and interview skills for medical residency and job interviews.



Registration with NRMP

Guidance and support in navigating the National Resident Matching Program (NRMP) registration process to secure a residency position.



SOAP - The Second Chance

Assistance in understanding and participating in the Supplemental Offer and Acceptance Program (SOAP) to secure a residency position if unmatched during the regular matching process.



Assistance in Visa & Housing:

Help and resources to navigate the complexities of obtaining the appropriate visa and finding suitable housing arrangements for medical professionals planning to work in the United States.



Comprehensive Study Plan:

Customised study plans designed to cover all aspects of USMLE preparation, ensuring thorough review of medical knowledge and exam readiness.



USMLE Study Calendar:

A structured study calendar outlining daily tasks and study goals to maintain focus and organisation during USMLE preparation, maximising study efficiency.



TEACHING AND LEARNING PARTNERS

Students get an opportunity to prepare & learn for one year through the world class content generated by the best minds in medicine and will get access to the following resources powered by McGraw Hill”.



McGraw Hill

A renowned resource integral to our training program, providing comprehensive educational materials for medical students.



Boards & Beyond

An invaluable component of the program, offering in-depth content and interactive learning to enhance medical knowledge



First Aid Forward

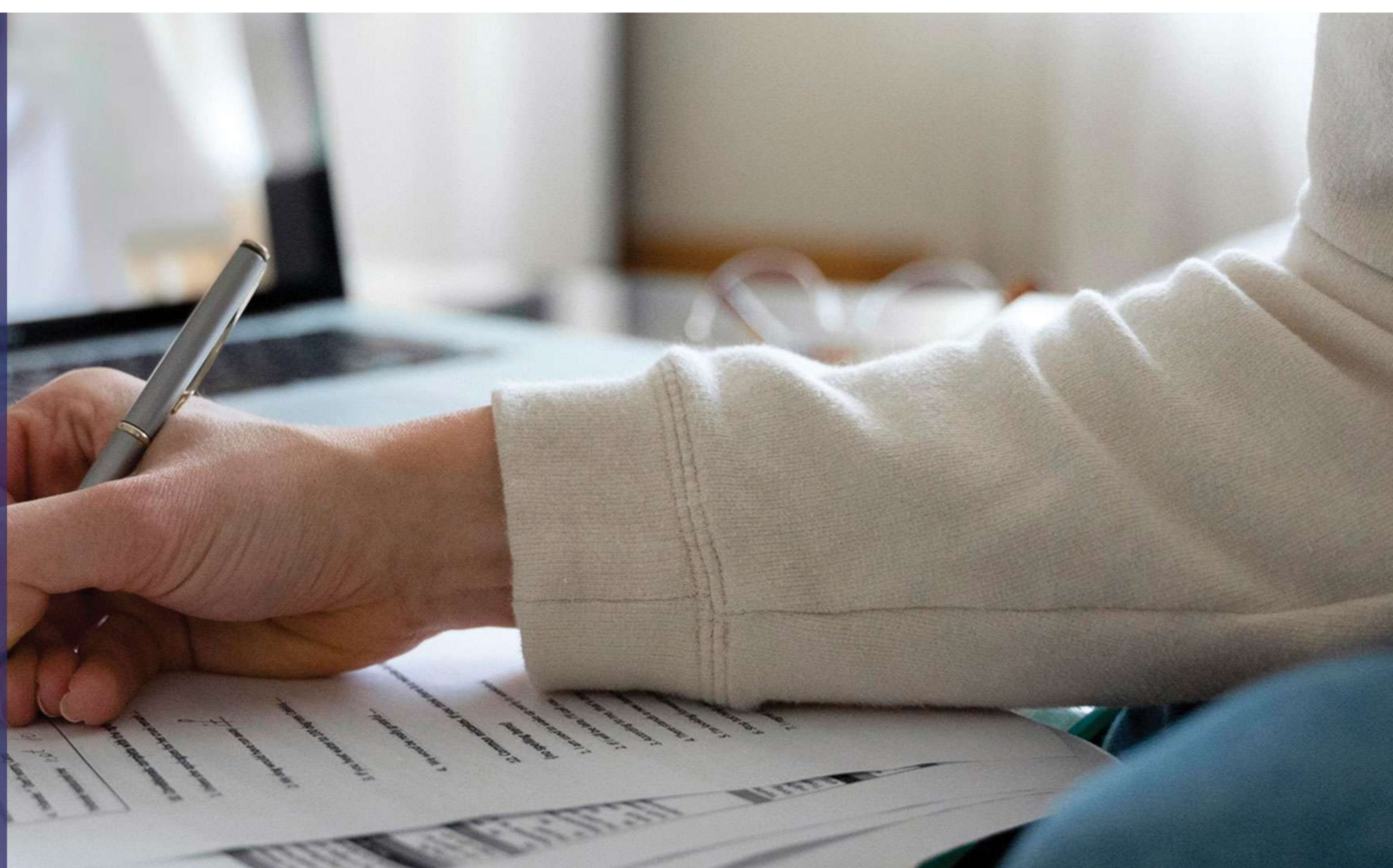
A crucial tool that delivers concise yet comprehensive information, serving as a cornerstone for medical exam preparation.



National Board of Medical Examiners

An essential assessment exam that offers valuable insights into individual progress and readiness for medical examinations.

“Live” Training
with Top class
resource persons
from McGraw Hill
access Medicine
and First Aid
USMLE





Dr. Anup Bhattacharya

- Temple University, University of Pennsylvania

USMLE STEP 1 – 261 , STEP 2 CK- 268, STEP 3 – 244

Graduating from the University of Pennsylvania in 2013, Anup Bhattacharya received his BA in Biological Basis of Behavior and Economics with honors recognition. Shortly after, Anup began working towards his MD at Lewis Katz School of Medicine at Temple University and achieved honors in all his clinical rotations. From 2015-2016, Anup served as President of AMSA and Co-Chair of Honor Board at Temple and in 2018, he received his MD.



Dr. Dylan Eiger, MD

- Harvard /Brigham and womens Hospital

MCAT -36 (519) USMLE STEP 1 – 246 USMLE STEP 2 – 255,

In 2016, Dylan Eiger graduated Cum Laude from Duke University with a BS in Chemistry with a concentration in Biochemistry. Matriculated in the MD/PhD Duke Medical Scientist Training Program in 2016, Dylan achieved honors in all clinical rotations and was accepted into Alpha Omega Alpha. He recently completed his PhD in Biochemistry in early 2022.



Dr. Sarah Godfrey, MD, MPH

- Harvard University, Columbia University

USMLE STEP 1 – 246, STEP 2CK - 266, STEP 3 – 258, ABIM - 429

Sarah completed her medical school, MPH, and internal medicine residency at Columbia University. She is now pursuing a combined fellowship in cardiology, advanced heart failure, and palliative care at UT Southwestern.



Dr. Rhodes Hambrick, MD

- NYU School of Medicine –

USMLE STEP 1 – 272, STEP 2CK – 278, STEP 3 - 272

Working toward his MD at NYU School of Medicine, Rhodes became a Howard Hughes Medical Institute Researcher and received the AOA Award given to the medical student who attained the highest scholastic rating for the four years of medical school. During medical school, Rhodes also scored >90% on his Internal Medicine, Pediatrics, Neurology, and Psychiatry shelf exams, achieved honors in all his core clerkships, and was the winner of the Community Service Award for outstanding service to his local community.



Dr. Caleb McEntire, MD

- Columbia university of physicians and surgeons

USMLE STEP 1 – 247 ,



India:
VC ICONIC, Kavuri Hills, Phase
1, Madhapur, Telangana -
500033

United States:
2515 sentinel chase way
Cumming
Georgia-30041

Singapore:
Pasir Ris Link, Singapore
518162

United Arab Emirates:
Office 12A - 03, Floor 12 A, Damac
XI Tower, Business Bay-Dubai,
UAE, PO BOX 237719

Contact US



Website

www.themet.world
www.ismedutech.com
www.mededucare.ae



Contact Number

+91 8929225583
+91 7888119999
+91 9618331212
+91 8978738295



Social Media Pages

