



# WHY ADVANCE PATHWAY TO AMERICA?

When it comes to the health research breakthroughs, or integrating cutting edge technology into the health practices, the United States of America has a clear lead over her global counterparts and logically the top choice for international students who aspire to make it big in the field of medicine.



# ADVANTAGES WITH THE **GLOBAL PATHWAY**

## Top-notch education

Pursuing residency in medicine abroad exposes you to leading medical institutions, renowned faculty, and advanced healthcare technologies, providing an unparalleled educational experience that shapes you into a globally competitive medical professional.

## Global Reputation

Global residency enhances your professional reputation, as the USA is home to some of the world's top-ranked hospitals and medical centers. The experience gained in this diverse and dynamic healthcare environment adds prestige to your career.

## Excellent Research Opportunities:

Unleash your potential and explore the realms of innovation with our dedicated research ecosystem. Pursuing a residency in medicine in the USA offers exposure to cutting-edge medical research, providing opportunities to collaborate with leading researchers and contribute to groundbreaking discoveries that shape the future of healthcare globally.





## High Salaries

Secure a rewarding future with a degree from The MET, where academic prowess translates into high earning potential. Our graduates are sought after by top employers globally, offering competitive salaries that reflect the value of your education and expertise. Pursuing residency in medicine in the USA not only positions you for lucrative career opportunities but also places you within a healthcare system known for its high salaries and comprehensive benefits, ensuring a financially rewarding and fulfilling career.

## Career Opportunities

Our extensive network and industry connections pave the way for diverse career opportunities, ensuring you find the path that aligns with your aspirations and passion. Residency in medicine in the USA opens doors to a wide range of career paths, including access to specialized fields, cutting-edge medical technologies, and the chance to work with some of the brightest minds in the medical profession.

## Multiple Specialties

Having a global degree allows you to specialize in a multitude of fields, ensuring that you receive comprehensive training and exposure to various medical disciplines, making you a well-rounded and adaptable medical professional.

## Worldwide Recognized Degrees

Pursuing a residency abroad adds a prestigious credential to your resume, making you a globally recognized medical professional with access to international career opportunities and collaborations.

# ABOUT THE **PROGRAM**

The entire program is laid out into four verticals:



**Training and Mentoring**



**Clinical Rotations**



**ERAS/CV Preparation**



**Residency Matching  
Program**

01

# Training and Mentoring

## Tailored Training Approach at The MET:

At The MET, we revolutionize medical education with a unique and personalized training program that blends the expertise of both Indian and international trainers. Here's how our training sets us apart:



### Comprehensive Training Team

We boast a team of three trainers per session, ensuring a diverse range of perspectives and methodologies. This triad approach enriches your learning experience and provides holistic insights into each topic.



### Strategic Topic Coverage

Our training program is strategically designed to cover each topic in three phases. In the first week, Indian trainers lay the foundation by focusing on fundamentals. The following week involves high-yield training, and in the third week, the topic is revisited by renowned trainers from McGraw Hill.



### Continuous Reinforcement

Weekly drills keep your knowledge sharp and continuously reinforce the previous week's topics. This dynamic structure ensures that you not only grasp the subject matter but also retain and apply it effectively over time.



### Premium Learning Resources

Our training integrates premium resources from McGraw Hill, Boards and Beyond, First Aid Forward, and Q Bank. This curated blend of materials ensures exposure to the best educational content available, enhancing the depth and quality of your learning.



### Structured Study Planning

We understand the importance of organized study schedules. That's why we provide specific study planners and schedules to cover all subjects systematically. This structured approach empowers you to manage your time efficiently and maximize your learning potential.



### Mentorship for Personalized Guidance

Mentorship is seamlessly embedded in our training program. Our experienced mentors provide personalized guidance, addressing your unique challenges and helping you navigate the complexities of medical education.



# 02 Clinical Rotations

At The MET, recognizing the significance of well-rounded clinical exposure, we present our Rotations Vertical, a meticulously crafted program spanning various medical specialties. Whether your interests lie in internal medicine, surgery, pediatrics, or other fields, our rotations ensure a comprehensive experience tailored to your unique aspirations.

We have strategically partnered with 28+ hospitals to ensure our clinical rotations offer a diverse and enriching environment. This collaboration provides you with an opportunity to experience various healthcare settings, enhancing your practical skills and understanding.



## Our program boasts several distinctive features:

### Diverse Specialties

Dive into rotations across various medical fields, broadening your understanding and refining your skills.



### Tailored Learning

Customize your rotations, aligning them with your interests and career objectives for a personalized experience.

### Hands-on Experience

Engage actively to gain practical insights, bridging the gap between theory and real-world application.



### Expert Preceptors

Learn from seasoned professionals serving as your preceptors during rotations. These experts are committed to guiding you, sharing invaluable experiences, and providing mentorship, ensuring you extract the utmost from your clinical exposure.

# Benefits Include

- **Guided Learning**

Receive personalized guidance from experienced preceptors, enriching your clinical knowledge.

- **Insights from Professionals**

Gain valuable perspectives and insights from seasoned healthcare experts, offering a broader understanding of medical practices.

- **Networking Opportunities**

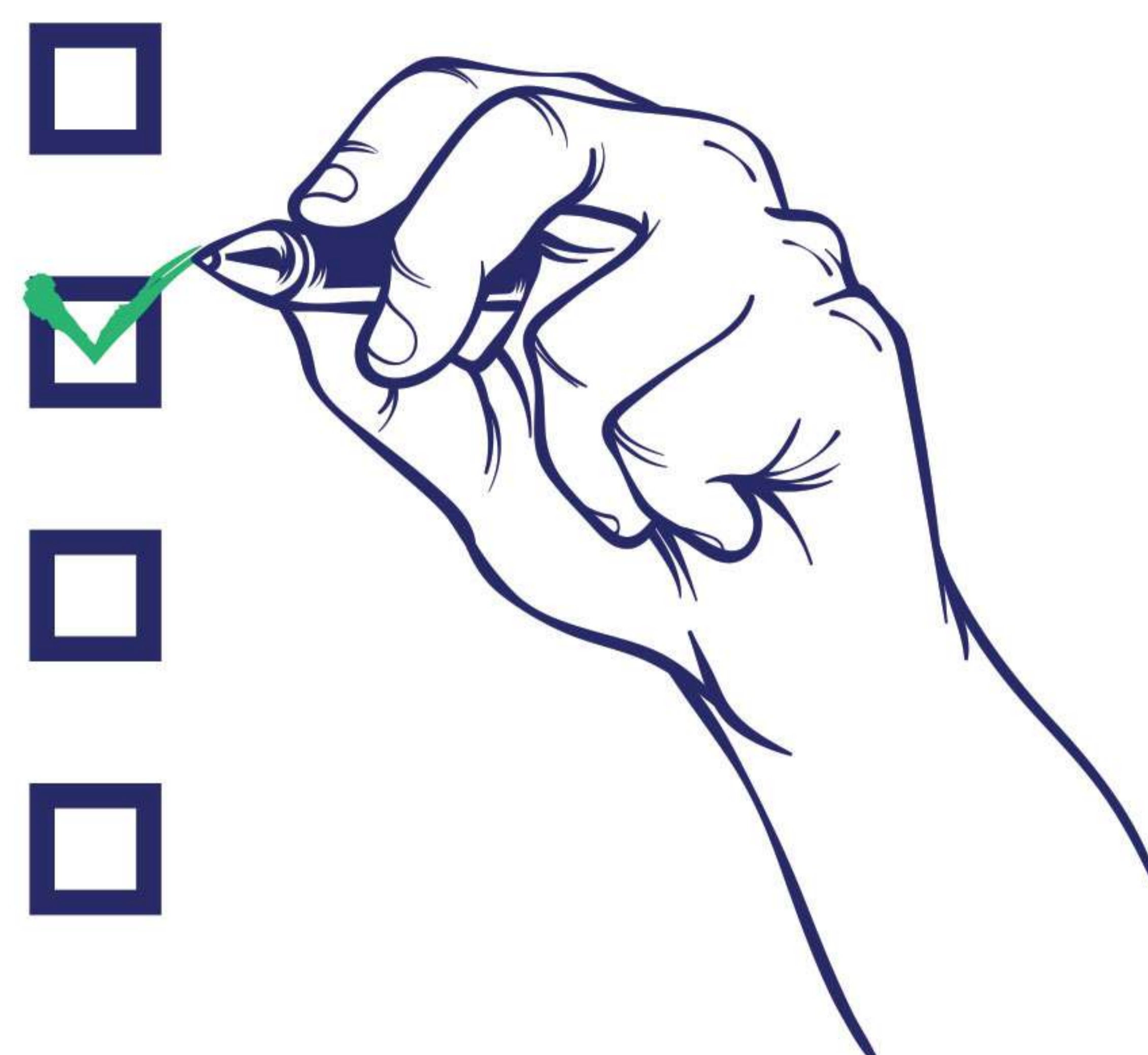
Build connections with established healthcare professionals, expanding your professional network.

- **Flexible Duration**

Tailor the duration of your rotations based on your schedule and learning objectives. Choose between Short-Term Rotations, ideal for focused exposure and exploration, and Long-Term Rotations, providing comprehensive immersion for in-depth learning.

- **Assured Letters of Recommendation (LORs)**

Tailor the duration of your rotations based on your schedule and learning objectives. Choose between Short-Term Rotations, ideal for focused exposure and exploration, and Long-Term Rotations, providing comprehensive immersion for in-depth learning.



## Our Assurance lies in



### Tailored Recommendations

Receive personalized LORs reflecting your unique strengths and achievements.



### Professional Endorsement

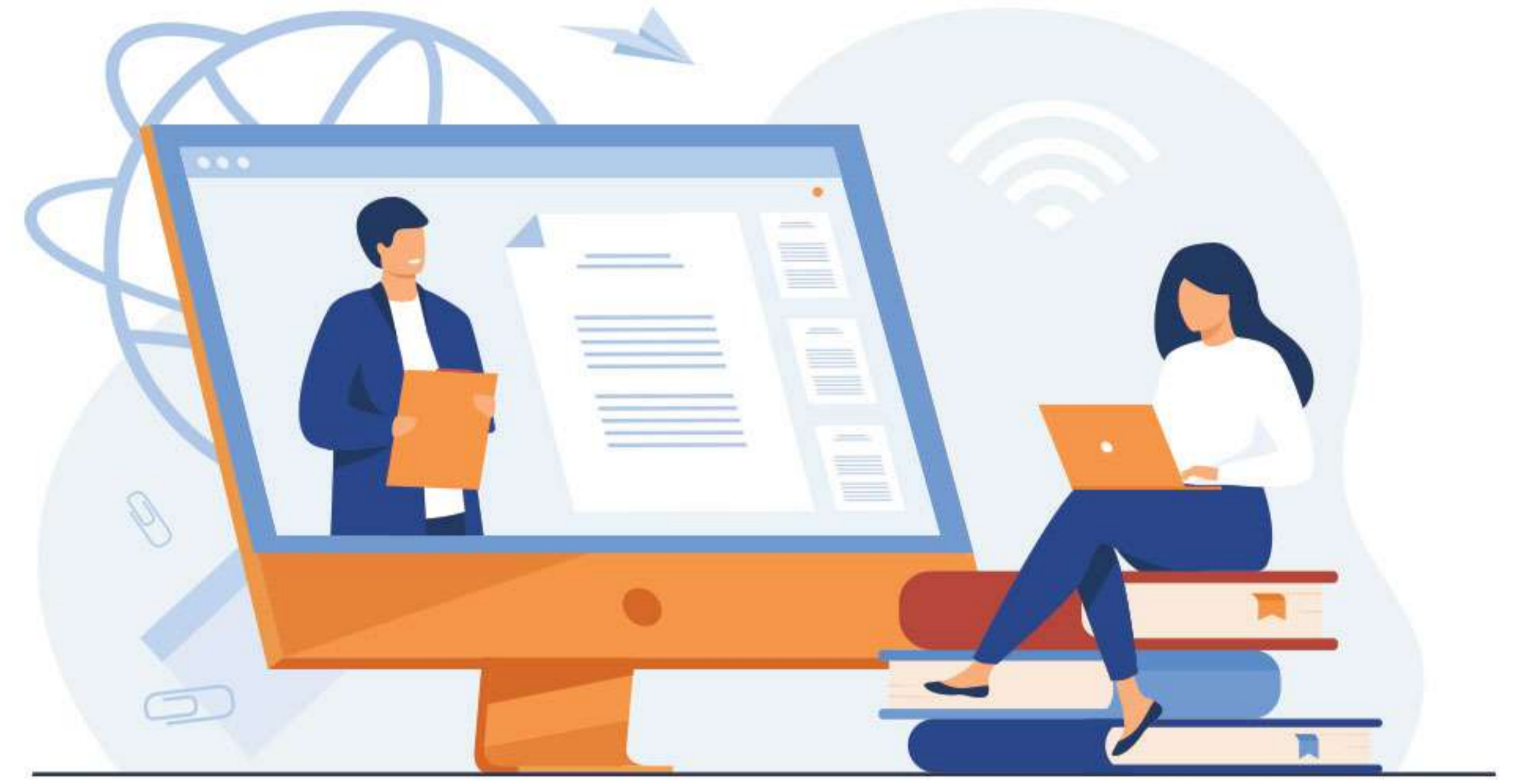
Leverage these recommendations for future academic and professional endeavors.



### Pathway to Success

Open doors to residency programs, fellowships, and more, backed by LORs that showcase your clinical proficiency and commitment.

Navigating the residency application process is made seamless with our comprehensive guidance and support. We assist you in creating a standout Electronic Residency Application Service (ERAS) application and a compelling Curriculum Vitae (CV) that effectively showcases your achievements and potential.



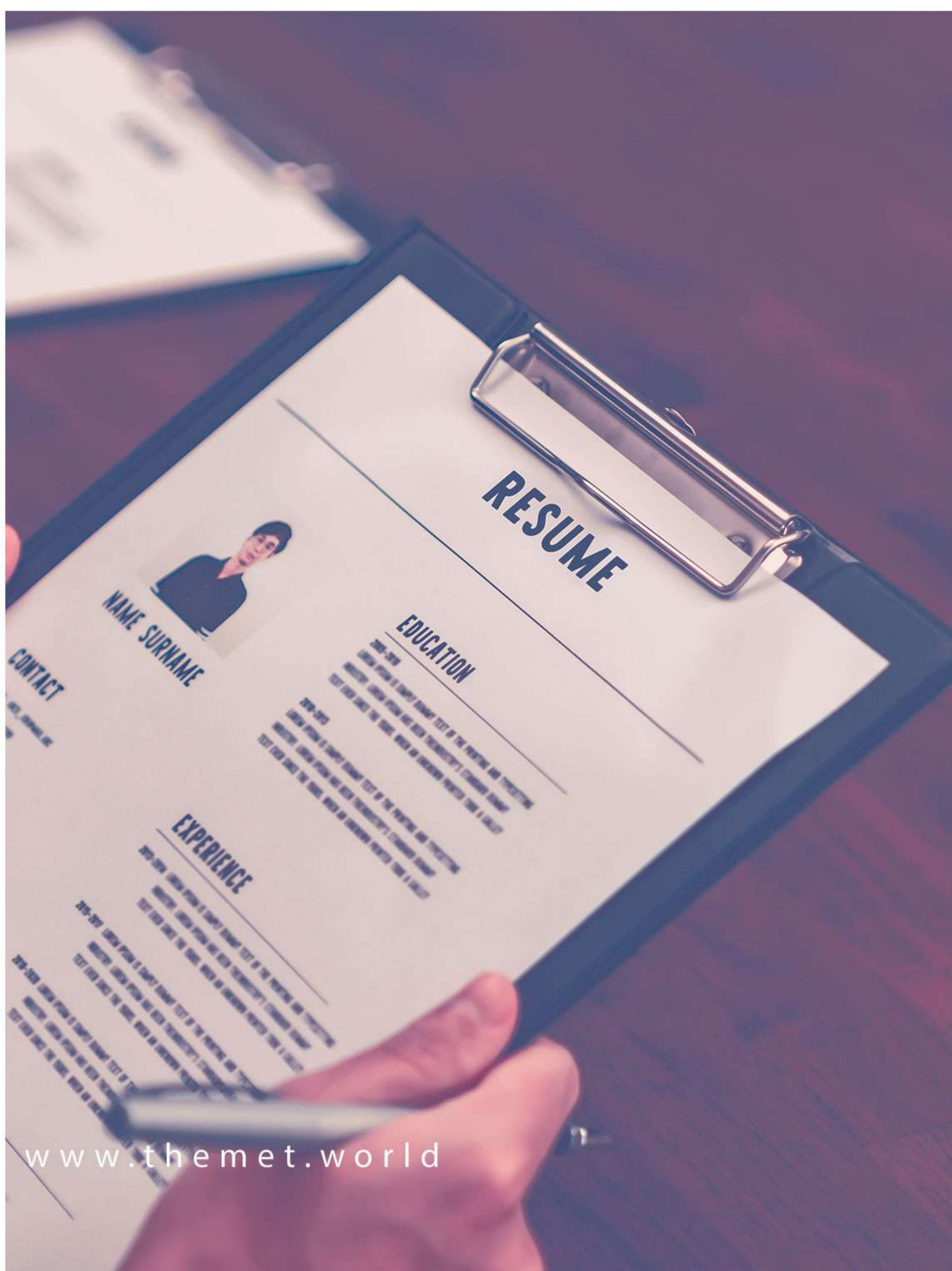
Crafting a compelling ERAS application is pivotal to securing a residency position. Our ERAS and CV Prep Vertical provide expert guidance to navigate the intricacies of the application process.

In the realm of ERAS Application Guidance, our program highlights include Personal Statement Enhancement, where you can craft a compelling narrative that accentuates your aspirations and accomplishments. Additionally, we offer support in securing impactful letters of recommendation from experienced preceptors and ensure your ERAS application is optimized to stand out among the competition.

Moving on to CV Preparation, we recognize that your Curriculum Vitae is a snapshot of your academic and professional journey. Our program focuses on preparing a CV that effectively communicates your qualifications and experiences, making a lasting impression on residency program directors. Program features include a Comprehensive CV Review, ensuring alignment with residency program expectations, Strategic Content Development to tailor your CV to emphasize relevant experiences and achievements, and Formatting Guidance for a professional and organized presentation of your credentials.

As you progress to Interview Preparation, securing interviews becomes a significant milestone. Our ERAS and CV Prep Vertical includes sessions to help you present yourself confidently and effectively during residency interviews. Preparation elements encompass Vocabulary Refinement for professionalism and expertise in medical terminology, strategies for Opening and Ending Conversations on a strong note, Customized Questionnaires based on your chosen specialty and hospital, Personality Development aligning with the values of your chosen specialty, Communication Skills for clarity and confidence, and understanding the do's and don'ts of Interview Etiquette.

Our program also guides you on What to Ask in an Interview, aiding you in showcasing your interest and making informed decisions about your future residency.





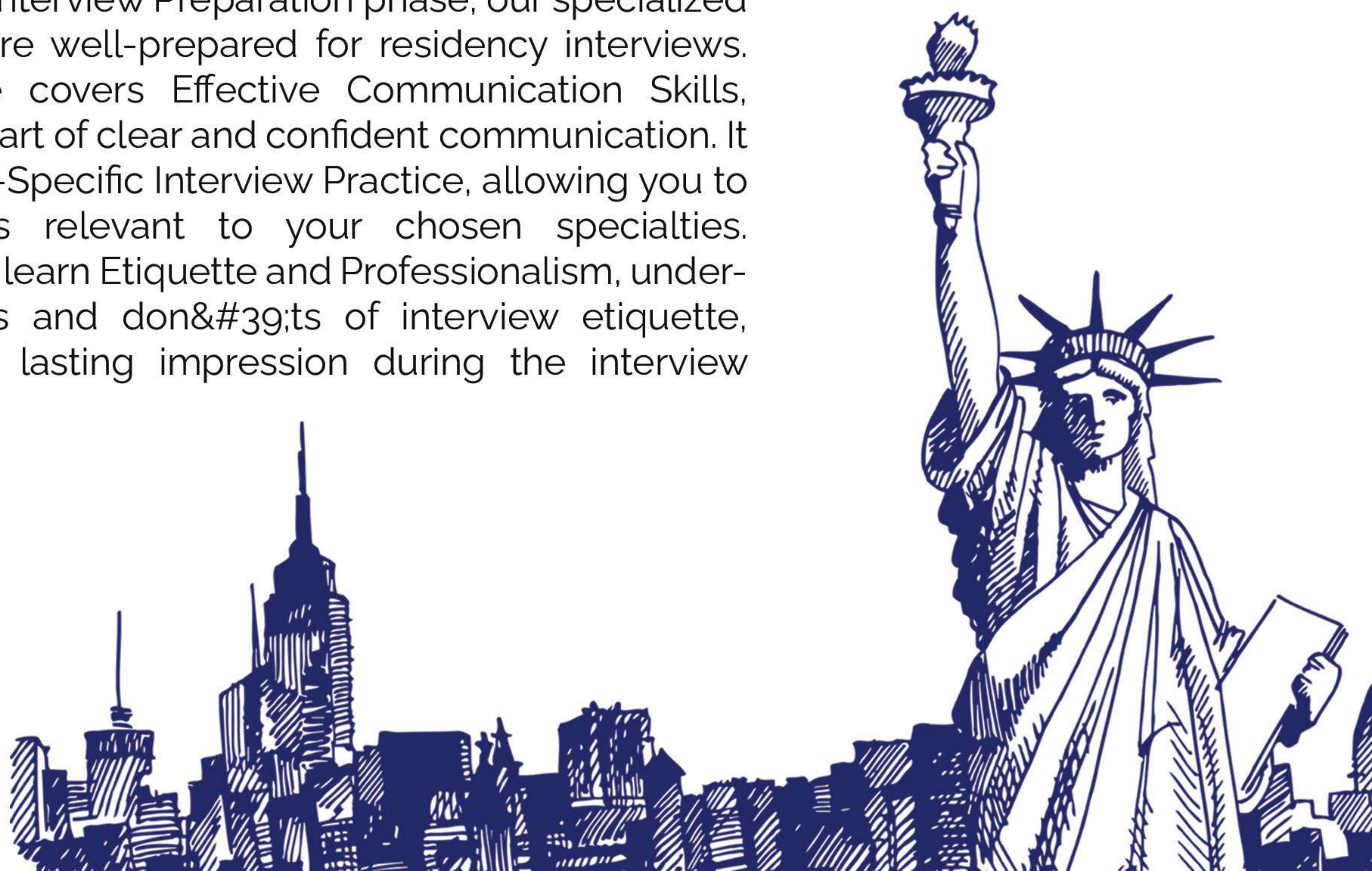
# 04 RESIDENCY MATCHING

In the journey toward a successful residency match, our Residency Match Vertical provides a comprehensive approach starting with Match Strategy Development. This involves crafting a personalized strategy tailored to your unique goals and preferences. Our experienced mentors collaborate with you to understand your strengths, goals, and preferences, ensuring a strategy that maximizes your chances of a successful match. The program highlights include an Individualized Strategy, Timeline Management to meet all deadlines, and Strategic Application Planning to optimize your application for your desired specialties.



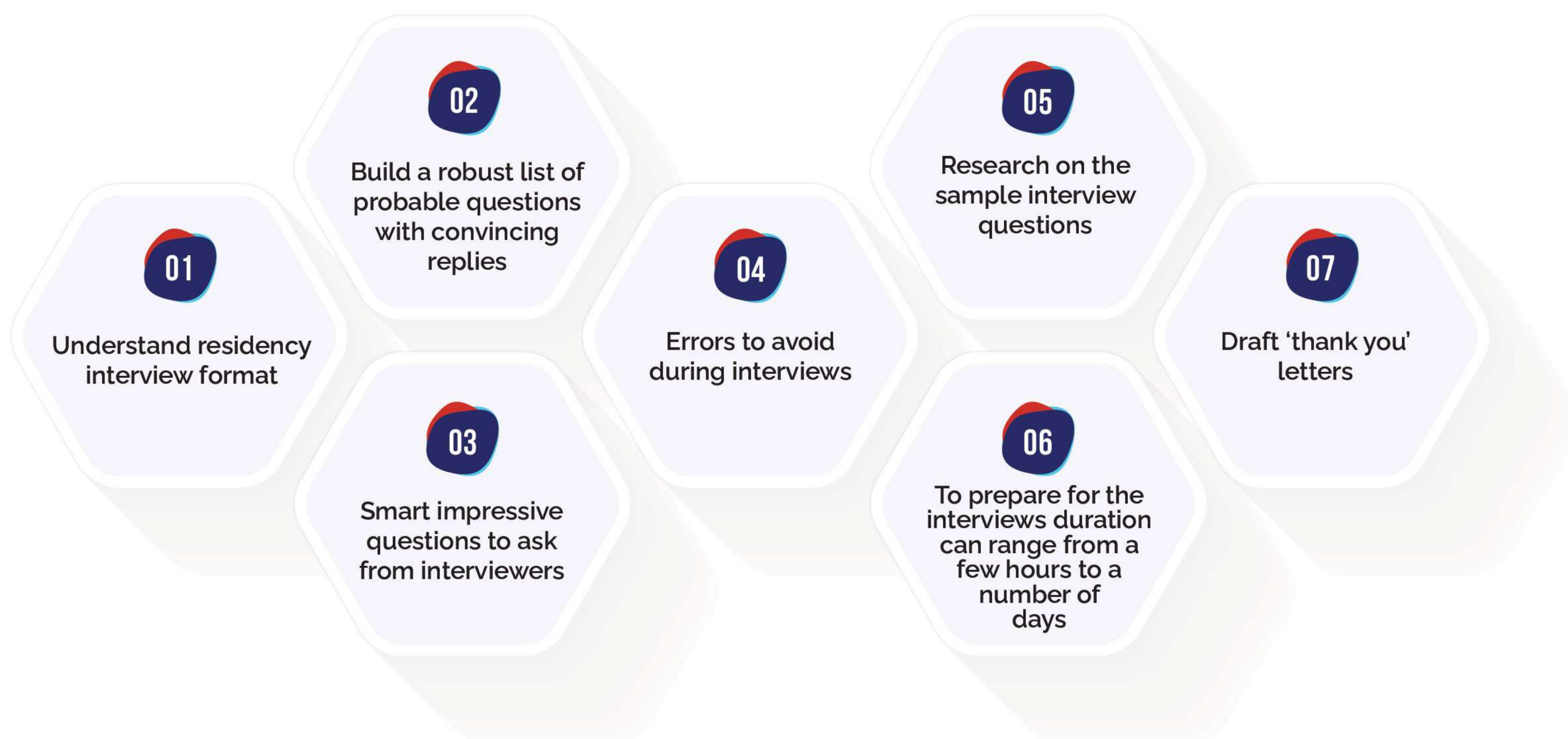
Moving on to Application Enhancement, we recognize the pivotal role of a compelling residency application in the match process. Our program offers comprehensive support to enhance your application, ensuring it reflects your accomplishments, experiences, and aspirations in the best light. This support includes Personal Statement Refinement for a compelling narrative, Letters of Recommendation Assurance for strong recommendations, and CV Optimization to present your academic and professional journey clearly and impressively.

As you progress to the Interview Preparation phase, our specialized module ensures you are well-prepared for residency interviews. The Interview Module covers Effective Communication Skills, helping you master the art of clear and confident communication. It also includes Specialty-Specific Interview Practice, allowing you to prepare for questions relevant to your chosen specialties. Additionally, you'll learn Etiquette and Professionalism, understanding the do's and don'ts of interview etiquette, ensuring you make a lasting impression during the interview process.



# INTERVIEW **WORKSHOPS**

There is no predetermined standard flowchart that one can follow in order to crack the residency interviews. But it's crucial to your success as the programme officials gauge your compatibility, strengths and weaknesses to assess your candidature. Our exhaustive workshops help you to



After completion of the programme with The MET, you will have in-depth understanding of the complex process involved in the preparation to gain entry to any U.S. post-graduate educational residency program. After acquiring deep knowledge through the workshops you will have a clear edge over your counterparts in terms of clarity of thoughts, articulation, confidence level and presentation.



## Registration with NRMP

The National Residency Match Program (NRMP) is a system that runs the annual Residency Match which couples IMG residency candidates with residency programs. Once you are through with the residency interviews, log into ERAS and update your profile with NRMP ID. Now you are ready for the Match. The MET handholds its clients to steer through the tedious procedure in the most proficient manner.



## SOAP – The Second Chance

The Supplemental Offer & Acceptance Program (SOAP) is a National Resident Matching Program-run system that matches eligible unmatched residency applicants to the unfilled positions. The process involves a rerun of the previous steps including submission of new applications to residencies, their updating in the ERAS and the interview. The MET candidates are assisted with getting registered with NRMP and ERAS account, matching eligibility criteria, any fresh documentation and apprising the candidate of the SOAP policies. The Post-match SOAP spans from Monday to Thursday in the match week and The MET helps the applicants to steer through the highly complicated procedure.



## ASSISTANCE IN VISA & HOUSING

The MET is deeply committed towards the wellbeing of the international medical graduates who wish to carve a niche for themselves in the land of opportunities that the USA is. Our vast experience and expertise in helping IMGs to have a smooth and comfortable stay in America is what sets us apart from our counterparts in the field. Our services range from obtaining best suited entry visas, to help in providing safe and affordable housing. We also counsel our clients focusing on what matters most during their settling down in the foreign land.



# POWERFUL PARTNERSHIPS, EXCEPTIONAL EDUCATION:

## Unveiling The MET's Collaborative Excellence

Discover the impactful collaborations that define **The MET**'s commitment to excellence. Our collaborative frontiers extend to industry titans, including McGraw Hill Access Medicine, First Aid, First Aid Forward, and Boards and Beyond.



### McGraw Hill Access Medicine

#### Elevating Excellence Elevating Excellence

In partnership with McGraw Hill Access Medicine, we redefine the standards of USMLE Training. This collaboration unlocks a wealth of resources and cutting-edge materials, ensuring our students experience unparalleled educational excellence. Together, we shape the future of healthcare professionals.

### First Aid

#### Precision in Exam Excellence

Our association with First Aid transcends partnership—it signifies a journey towards exam brilliance. Collaboratively, we equip students with expert guidance and resources, surpassing the benchmarks of medical examinations. This partnership forms the cornerstone of success, guiding students from medical school to residency.



### First Aid Forward:

#### Nurturing Forward Thinkers

Embark on a transformative journey in medical education with First Aid Forward. This collaboration empowers students with visionary strategies, resources, and mentorship. At TheMET, challenges are not hurdles but opportunities for growth and innovation, guided by the forward-thinking approach of First Aid Forward.

### Boards and Beyond:

#### A Holistic Educational Symphony

Our alliance with Boards and Beyond reinforces our commitment to a holistic educational experience. Providing medical students with on-demand video libraries and question banks, this collaboration goes beyond memorization to build a solid foundation of understanding. We seamlessly integrate cutting-edge content into our programs, exceeding academic standards. The result? Students who not only excel in exams but grasp the practical dimensions of their chosen medical specialties.



# EXTRAORDINARY BENEFITS WITH THE MET'S COMPREHENSIVE TRAINING PROGRAM

✓ Aligned Study Plans with Medical School Curriculum

✓ Engaging Weekly Drills for Reinforcement

✓ Personalized Mentorship for Academic Success

✓ Advanced Time Management Techniques

✓ Proven Test-Taking Strategies

✓ High-yield training for Exam Excellence

✓ Specialized Communication Skills Training

✓ Subject-specific drills for In-Depth Understanding

✓ Memory Retention Techniques through Mnemonics

✓ Stress Management Strategies.

✓ Interview workshops

✓ Registration with NRMP

✓ Assistance in Visa & Housing



## Dr. Anup Bhattacharya

- Temple University, University of Pennsylvania

USMLE STEP 1 – 261 , STEP 2 CK- 268, STEP 3 – 244

Graduating from the University of Pennsylvania in 2013, Anup Bhattacharya received his BA in Biological Basis of Behavior and Economics with honors recognition. Shortly after, Anup began working towards his MD at Lewis Katz School of Medicine at Temple University and achieved honors in all his clinical rotations.



## Dr. Dylan Eiger, MD

- Harvard /Brigham and womens Hospital

MCAT -36 (519) USMLE STEP 1 – 246 USMLE STEP 2 – 255,

In 2016, Dylan Eiger graduated Cum Laude from Duke University with a BS in Chemistry with a concentration in Biochemistry. Matriculated in the MD/PhD Duke Medical Scientist Training Program in 2016, Dylan achieved honors in all clinical rotations and was accepted into Alpha Omega Alpha.



## Dr. Sarah Godfrey, MD, MPH

- Harvard University, Columbia University

USMLE STEP 1 – 246, STEP 2CK - 266, STEP 3 – 258, ABIM - 429

Sarah completed her medical school, MPH, and internal medicine residency at Columbia University. She is now pursuing a combined fellowship in cardiology, advanced heart failure, and palliative care at UT Southwestern.



## Dr. Rhodes Hambrick, MD

- NYU School of Medicine –

USMLE STEP 1 – 272, STEP 2CK – 278, STEP 3 - 272

Working toward his MD at NYU School of Medicine, Rhodes became a Howard Hughes Medical Institute Researcher and received the AOA Award given to the medical student who attained the highest scholastic rating for the four years of medical school. During medical school, Rhodes also scored >90% on his Internal Medicine, Pediatrics, Neurology, and Psychiatry shelf exams.



## Dr. Caleb McEntire, MD

- Columbia university of physicians and surgeons

USMLE STEP 1 – 247 ,

# PATHWAYS TO VICTORY

## STORIES OF SUCCESS WITH THE MET



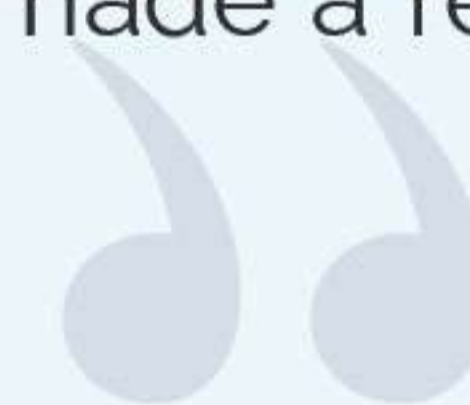
The MET was the guiding light in my journey to a U.S. residency. The tailored training and exceptional mentorship prepared me not just academically but also professionally. Today, I'm thriving in my residency, thanks to The MET's unwavering support.

**Dr. Sarah Matthews**



The transition to a U.S. residency was made smoother by TheMET. It wasn't just about study plans; it was about the hands-on mentorship that boosted my confidence. The personalized touch they bring is exceptional and made a real difference in my journey.

**Dr. Raj Patel**



The MET's training program stands out as a beacon in my journey to a U.S. residency. The emphasis on high-yield training, subject-specific drills, and weekly drills created a robust foundation. The resources from collaborations like McGraw Hill and First Aid Forward added an extra layer of excellence.

**Dr. Deepa shree**



The MET's training not only prepared me for exams but instilled a deep understanding of my medical specialties. It was a transformative experience that played a pivotal role in my successful transition to residency.

**Dr. Shreya nair**





**India:**  
VC ICONIC, Kavuri Hills, Phase  
1, Madhapur, Telangana -  
500033

**United States:**  
2515 sentinel chase way  
Cumming  
Georgia-30041

**Singapore:**  
Pasir Ris Link, Singapore  
518162

**United Arab Emirates:**  
Office 12A - 03, Floor 12 A, Damac  
XI Tower, Business Bay-Dubai,  
UAE, PO BOX 237719

# Contact US



## Website

[www.themet.world](http://www.themet.world)  
[www.ismedutech.com](http://www.ismedutech.com)  
[www.mededucare.ae](http://www.mededucare.ae)



## Contact Number

+91 8929225583  
+91 7888119999  
+91 9618331212  
+91 8978738295



## Social Media Pages

